

General description

Liquid chiller units for remote condensation and indoor installation.

Structure

The unit features a galvanized steel frame further protected with polyester powder painting. The frame supports the main components and allows easy access for maintenance and other necessary operations.

Compressors

Screw semihermetic, with built-in oil separator, crankcase heater, oil sight glass, thermal protection and intercepting valves.

Evaporator

Shell and tube type, with two independent refrigerants circuits and one water circuit.

Electrical panel

Includes: main switch with door safety interlock; fuses, overload protection for compressors; interface relays and electrical terminals for external connections.

Microprocessor

for automatic control of the unit allowing continuous display of the operational status of the unit, control set and real water temperature and, in case of partial or total block of the unit, indication of security device that intervened.

Refrigerant circuit

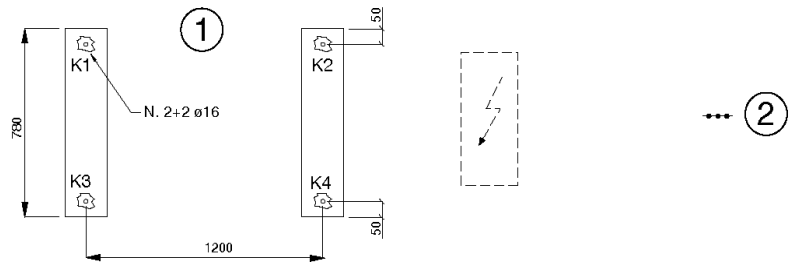
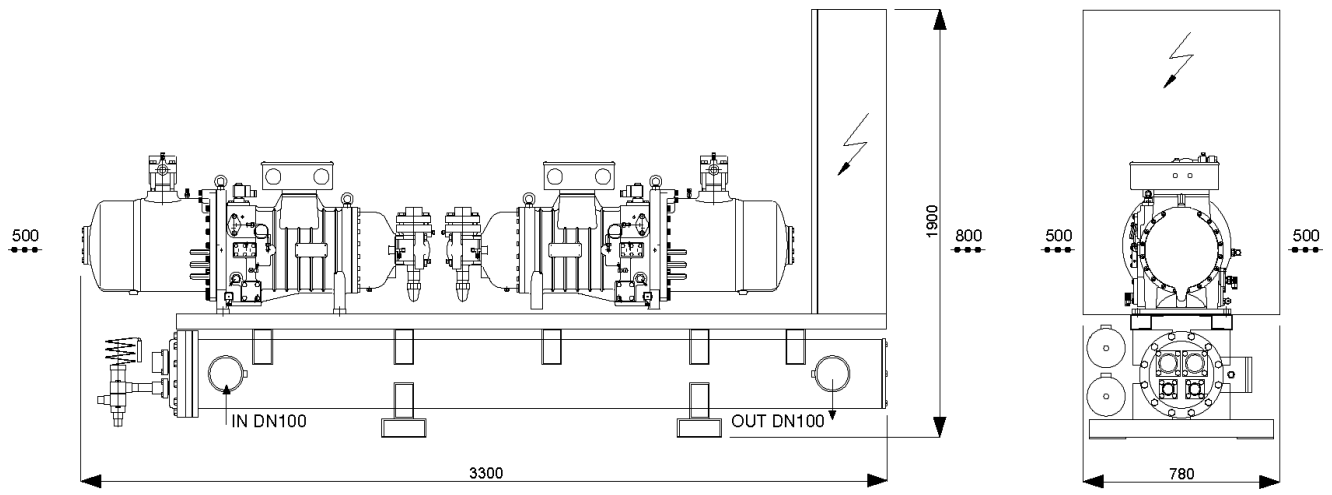
Each unit includes two independent refrigerant circuits. Produced in copper tubing, all models have the following components: thermostatic expansion valve with external equalisation, electro valve on liquid line, filter-drier, level and humidity indicator, high and low pressure switches (with fixed setting) and safety valve.

Water circuit

Includes: evaporator, temperature sensor, antifreeze sensor, manual air vent and water drain.

OFFER: SZPITAL PIŁA		POSITION: 1		QUANTITY: 1	
GENERAL INFORMATION				Summer	Winter
Cooling capacity	kW	170,0			
Heating capacity	kW				
Power input compressors	kW	59,0			
Refrigerant	Type	R407C			
Compressors	Type	Screw			
Compressors / Refrigerant circuits	n°	2 / 2			
Capacity steps	%	0/33/50/83/100			
Refrigerant charge	kg				
ESEER					
IPLV					
ELECTRICAL DATA					
Power input unit	kW	59,0			
Input current unit	A	93,3			
Max input current unit	A	136,0			
Inrush current unit ¹	A	308,0			
Supply voltage (power)	V/Hz/Ph	400/50/3			
Supply voltage (auxiliary)	V/Hz/Ph	230/50/1			
SOUND PRESSURE					
Sound pressure level at 1 m from the unit (ISO 3744)	dB(A)	64			
HYDRAULIC SECTION (SECONDARY)					
Evaporator	Type	Tube bundle			
Fluid		Water			
Inlet temperature	°C	12,0			
Outlet temperature	°C	7,0			
Waterflow	l/s	8,2			
Pressure drop	kPa	45,0			
Condensing temperature	°C	45,0			
DIMENSIONS AND WEIGHT					
Length x Width x Height	mm	3300x780x1900			
Transport weight / Operating weight	kg	920 / 975			

MEA 702-V
Condenserless



- 1) Basement
- 2) Clearance area